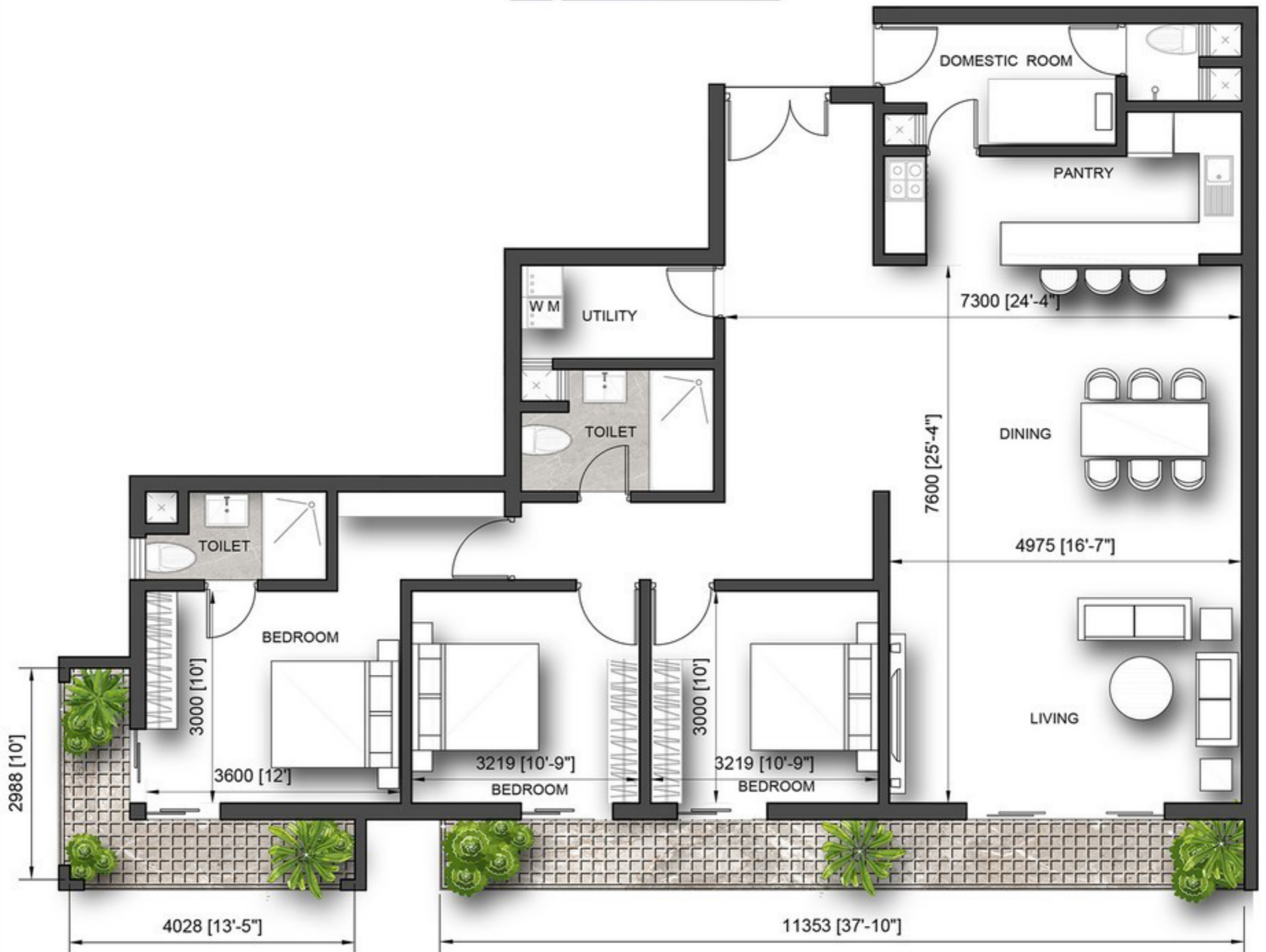
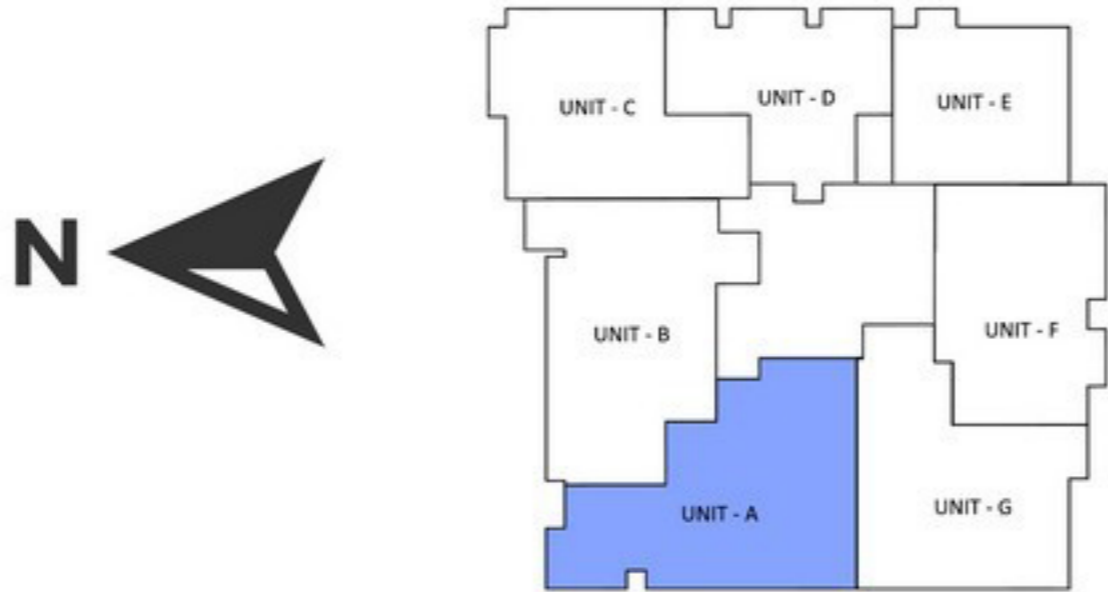


LEVEL 02 - 10 - UNIT A

### 03 BEDROOM AND MAID'S ACCOMADATION

AREA : 1600 Sq ft



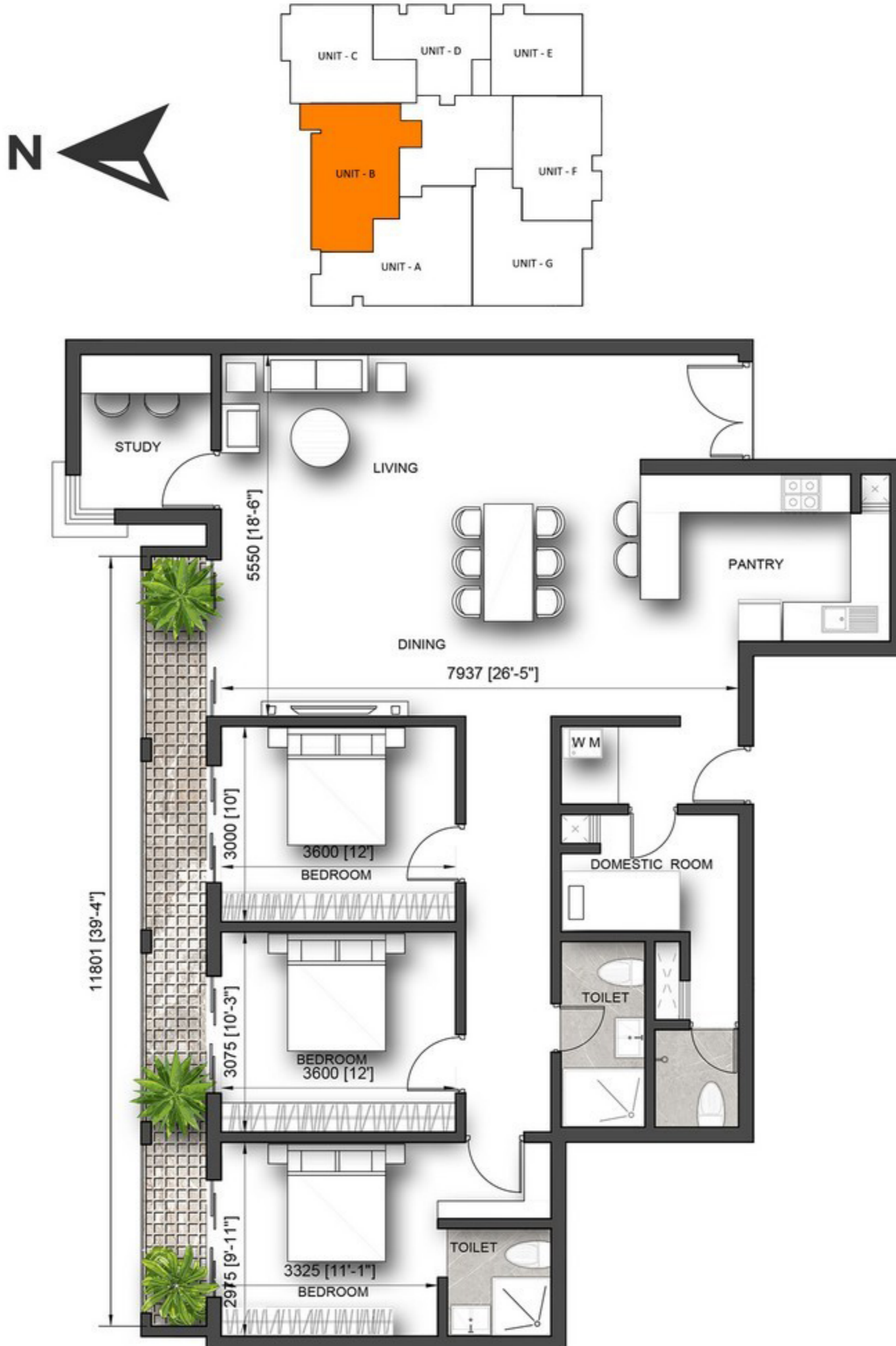
NOTE:

ALL PLANS ARE SUBJECT TO AMENDMENT AS APPROVED OR REQUIRED BY THE RELEVANT AUTHORITIES, AS WELL AS CHANGES NECESSITATED BY THE CONSULTANTS / MEP ENGINEERS DEMANDS. STATED FLOOR AREAS ARE APPROXIMATE MEASUREMENTS ONLY , SUBJECT TO FINAL SURVEY AND DOES NOT DEMARCATHE THE LEGAL BOUNDARIES OF THE APARTMENT. DEPICTION OF FURNISHINGS ARE FOR REFERENCE ONLY.

LEVEL 02 - 10 - UNIT B

03 BEDROOM AND MAID'S ACCOMADATION

AREA : 1525 Sq ft



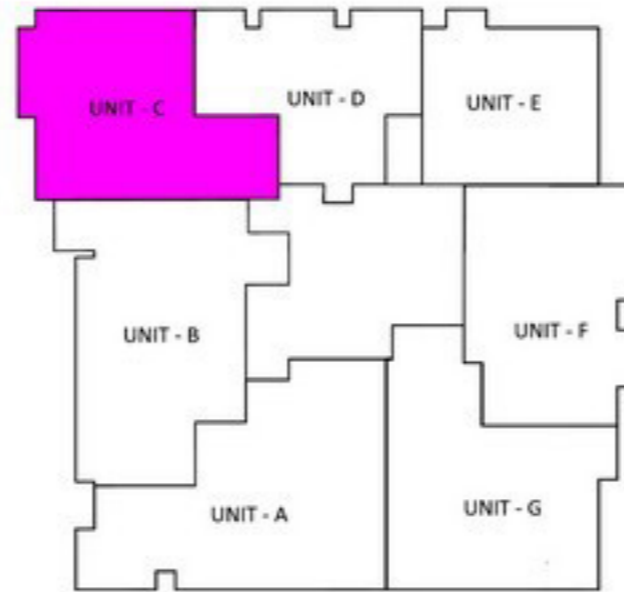
NOTE:

ALL PLANS ARE SUBJECT TO AMENDMENT AS APPROVED OR REQUIRED BY THE RELEVANT AUTHORITIES, AS WELL AS CHANGES NECESSITATED BY THE CONSULTANTS / MEP ENGINEERS DEMANDS. STATED FLOOR AREAS ARE APPROXIMATE MEASUREMENTS ONLY, SUBJECT TO FINAL SURVEY AND DOES NOT DEMARCATATE THE LEGAL BOUNDARIES OF THE APARTMENT. DEPICTION OF FURNISHINGS ARE FOR REFERENCE ONLY.

LEVEL 02 - 10 - UNIT C

03 BEDROOM AND MAID'S ACCOMADATION

AREA : 1230 Sqft



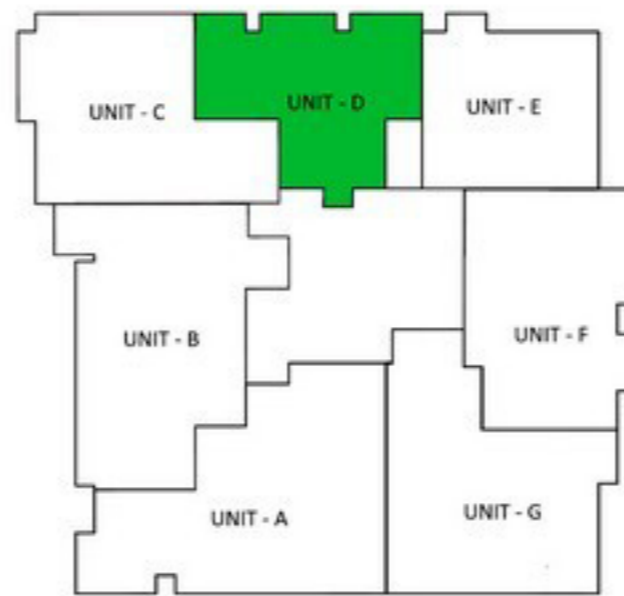
NOTE:

ALL PLANS ARE SUBJECT TO AMENDMENT AS APPROVED OR REQUIRED BY THE RELEVANT AUTHORITIES, AS WELL AS CHANGES NECESSITATED BY THE CONSULTANTS / MEP ENGINEERS DEMANDS. STATED FLOOR AREAS ARE APPROXIMATE MEASUREMENTS ONLY , SUBJECT TO FINAL SURVEY AND DOES NOT DEMARCATATE THE LEGAL BOUNDARIES OF THE APARTMENT. DEPICTION OF FURNISHINGS ARE FOR REFERENCE ONLY.

LEVEL 02 - 10 - UNIT D

02 BEDROOM

AREA : 980 Sqft



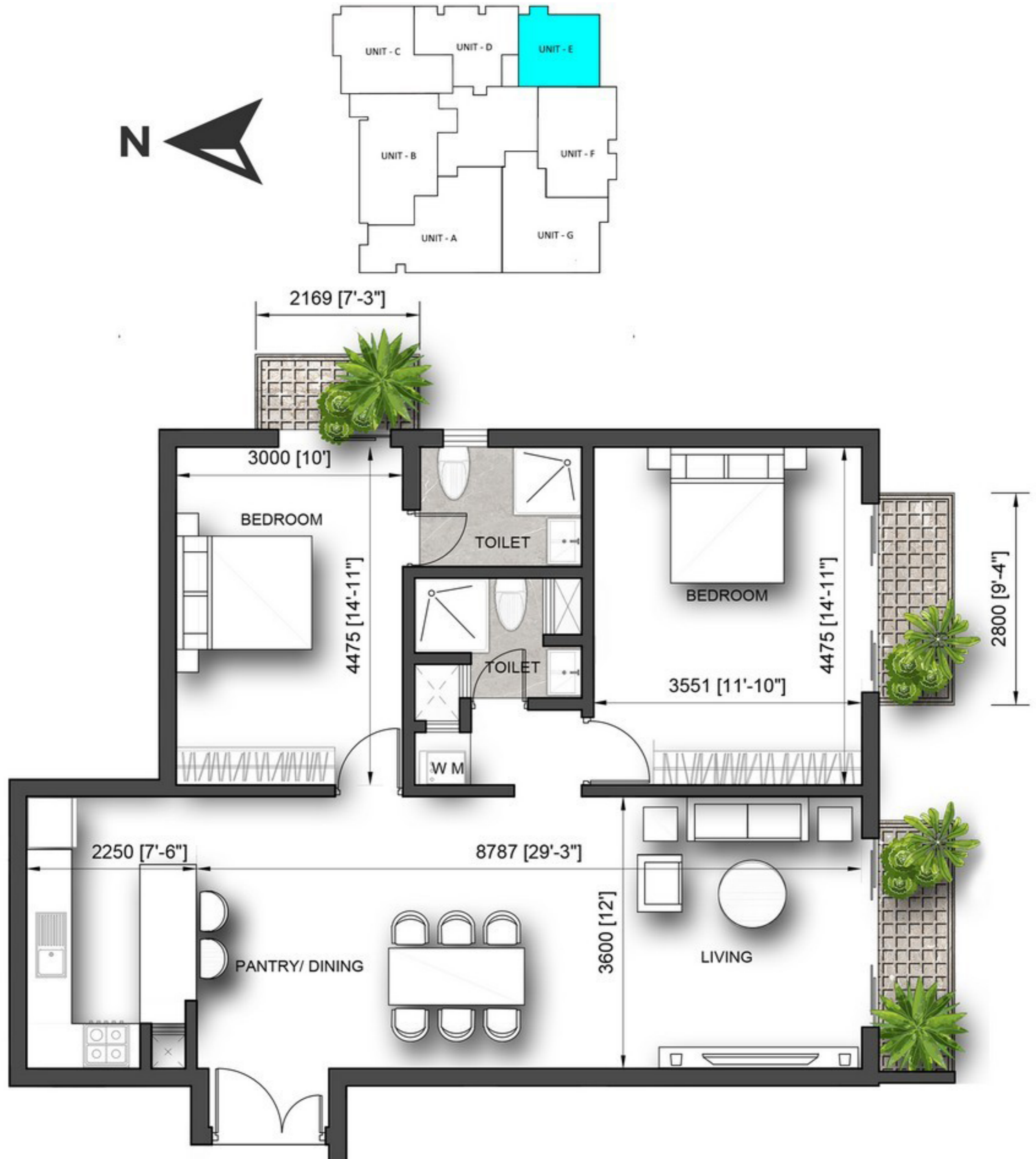
NOTE:

ALL PLANS ARE SUBJECT TO AMENDMENT AS APPROVED OR REQUIRED BY THE RELEVANT AUTHORITIES, AS WELL AS CHANGES NECESSITATED BY THE CONSULTANTS / MEP ENGINEERS DEMANDS. STATED FLOOR AREAS ARE APPROXIMATE MEASUREMENTS ONLY, SUBJECT TO FINAL SURVEY AND DOES NOT DEMARCATATE THE LEGAL BOUNDARIES OF THE APARTMENT. DEPICTION OF FURNISHINGS ARE FOR REFERENCE ONLY.

LEVEL 02 - 10 - UNIT E

02 BEDROOM

AREA : 1040 Sqft



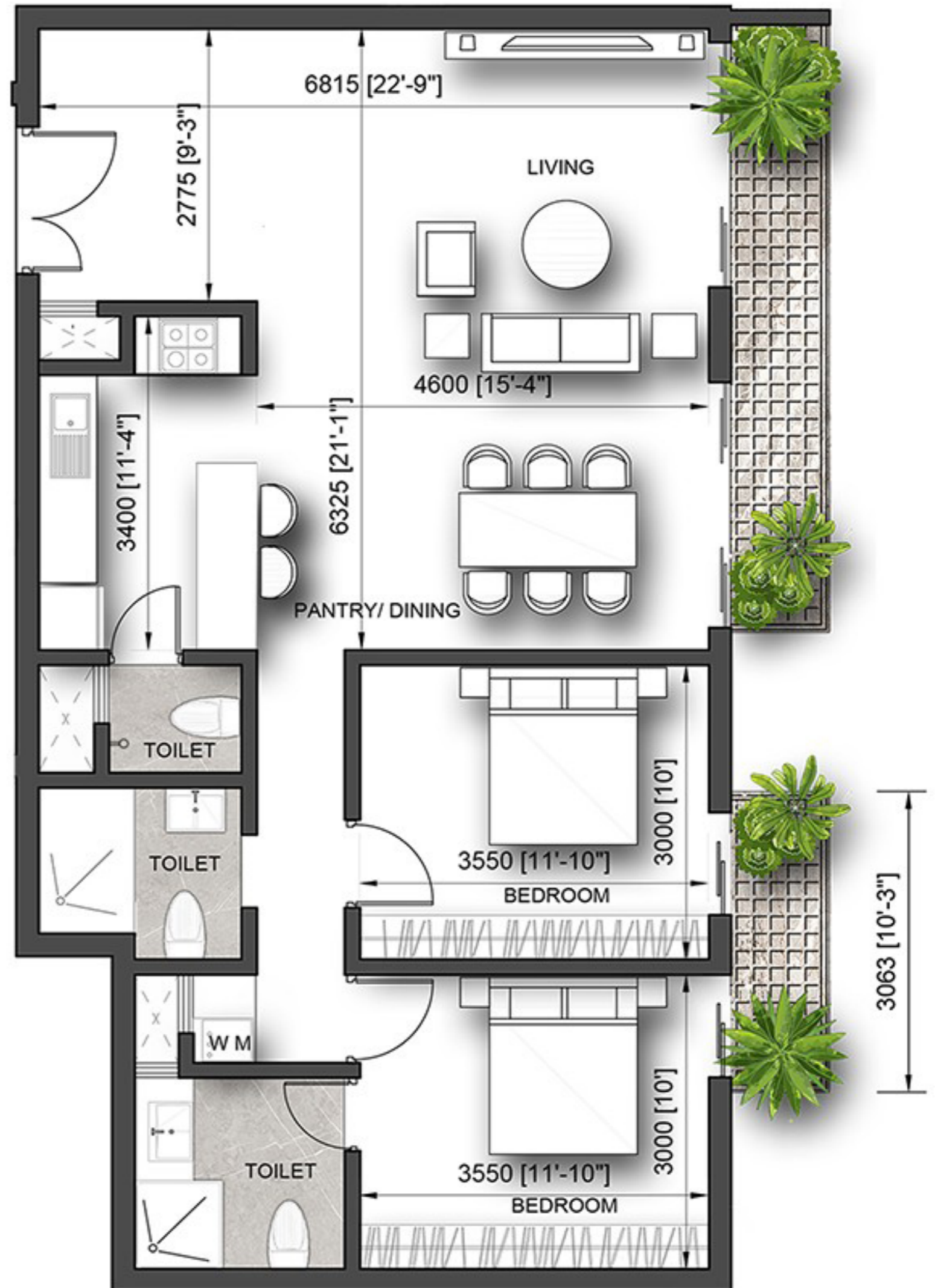
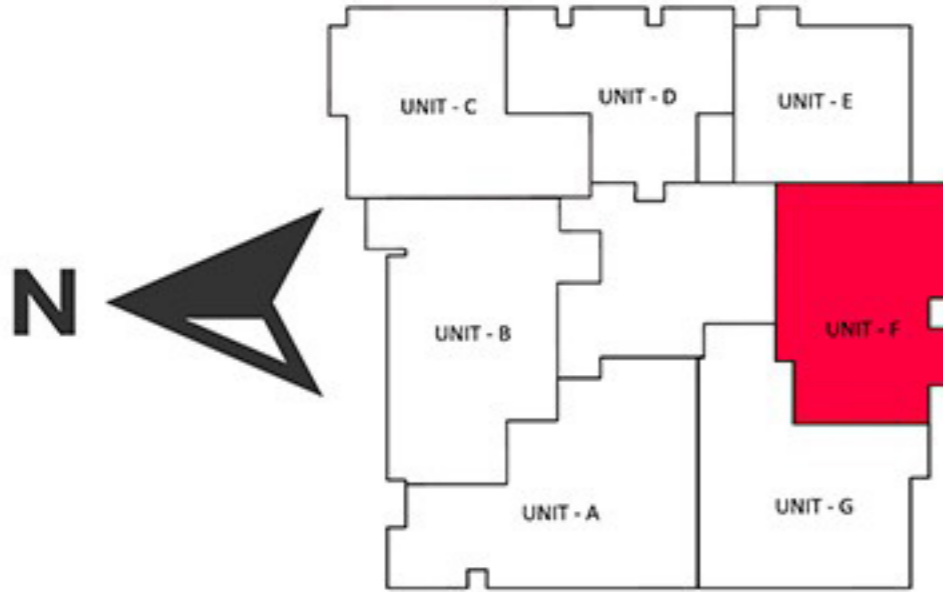
#### NOTE:

ALL PLANS ARE SUBJECT TO AMENDMENT AS APPROVED OR REQUIRED BY THE RELEVANT AUTHORITIES, AS WELL AS CHANGES NECESSITATED BY THE CONSULTANTS / MEP ENGINEERS DEMANDS. STATED FLOOR AREAS ARE APPROXIMATE MEASUREMENTS ONLY, SUBJECT TO FINAL SURVEY AND DOES NOT DEMARCATATE THE LEGAL BOUNDARIES OF THE APARTMENT. DEPICTION OF FURNISHINGS ARE FOR REFERENCE ONLY.

LEVEL 02 - 10 - UNIT F

02 BEDROOM

AREA : 1050 Sqft



**NOTE:**

ALL PLANS ARE SUBJECT TO AMENDMENT AS APPROVED OR REQUIRED BY THE RELEVANT AUTHORITIES, AS WELL AS CHANGES NECESSITATED BY THE CONSULTANTS / MEP ENGINEERS DEMANDS. STATED FLOOR AREAS ARE APPROXIMATE MEASUREMENTS ONLY, SUBJECT TO FINAL SURVEY AND DOES NOT DEMARCAT THE LEGAL BOUNDARIES OF THE APARTMENT. DEPICTION OF FURNISHINGS ARE FOR REFERENCE ONLY.

LEVEL 02 - 10 - UNIT G

03 BEDROOM

AREA : 1400 Sqft



**NOTE:**

ALL PLANS ARE SUBJECT TO AMENDMENT AS APPROVED OR REQUIRED BY THE RELEVANT AUTHORITIES, AS WELL AS CHANGES NECESSITATED BY THE CONSULTANTS / MEP ENGINEERS DEMANDS. STATED FLOOR AREAS ARE APPROXIMATE MEASUREMENTS ONLY, SUBJECT TO FINAL SURVEY AND DOES NOT DEMARCATATE THE LEGAL BOUNDARIES OF THE APARTMENT. DEPICTION OF FURNISHINGS ARE FOR REFERENCE ONLY.